

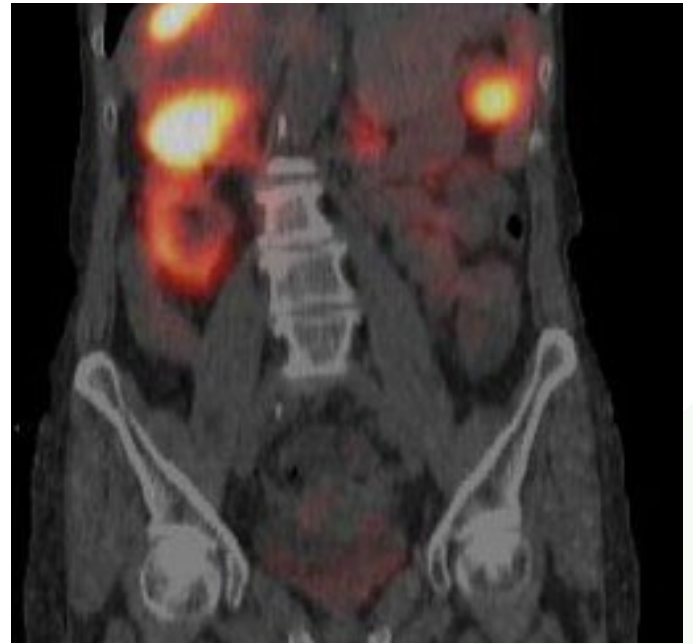
Preparing for your Ga 68 Netspot PET/CT Scan

Date/Time: _____

- It is important that you check in at the time listed above and follow the instructions below or you may have to be rescheduled. You may be contacted prior to your appointment to go over additional info. such as insurance, treatment history, and other specific questions that we may have.
- If we do contact you in advance you will be asked about previous diagnostic imaging studies that you may have had done. You may be asked to bring copies of these reports and images with you to your appointment.
- If you are pregnant or nursing, please notify us prior to your exam.
- You will need to be off short-acting somatostatin medication 24hrs prior to your Ga 68 Netspot PET/CT scan.
- You will need to be off long-acting somatostatin medication 4 weeks prior to your Ga 68 Netspot PET/CT scan.

The Day of Your Ga 68 Netspot PET/CT Scan

- Hydrate well with fluids the day of your exam prior to arriving for your exam.
- Fast 2 hours prior to your arrival, clear fluids are allowed.
- Take medications as prescribed except lasix (water pill).
- Plan to be with us for 2 hours. You may bring reading materials or portable listening device, TV will be provided for viewing.
- Dress comfortably and warmly. Scanner rooms can sometimes be cool. **DO NOT WEAR JEWELRY OR METAL ON CLOTHES.**
- You will need a driver for your exam ONLY if you will be taking a prescription medicine for anxiety or claustrophobia.
- You may wear your hearing aids, glasses and dentures to your appointment.
- You will be asked to drink clear fluids after we inject the Ga 68 Netspot. You can bring clear fluids with you if you prefer something other than water.



Your physician has referred you for a Ga 68 Netspot PET/CT Scan.

Please take a few minutes to read this information on Ga 68 Netspot PET/CT Scan to help you understand and prepare for your exam. Your physician and nurses will also be able to answer additional questions you may have about your exam.



2500 W 12th Street Erie, PA 16505
(814) 838-9000 | www.trcc.org

What is a Ga 68 Netspot PET/CT Scan?

Ga 68 Netspot PET/CT Scan combines the functional information from a Positron Emission Tomography (PET) exam with the anatomical information from a Computed Tomography (CT) exam into one single exam.

Ga 68 Netspot PET/CT Scan is a specific imaging procedure that is used to assess the localization of somatostatin receptor positive neuroendocrine tumors. Somatostatin is a hormone important in regulating the endocrine system through its interaction with other hormones, including most of those in the gastrointestinal tract. Somatostatin binds to somatostatin receptors which are characteristically over expressed by neuroendocrine tumors. The Ga 68 Netspot is a radioactive product that binds to the somatostatin receptors, highlighting the neuroendocrine tumors on the PET Scan. This information enables your physician to make an early diagnosis and plan the most effective treatment.

A CT scan uses a combination of X-rays and computers to give the radiologist a non-invasive way to see inside your body. One advantage of CT is its ability to rapidly acquire two-dimensional pictures of your anatomy. Using a computer, these 2D images can be presented in 3D for in-depth clinical evaluation.

The PET exam pinpoints neuroendocrine tumors and the CT exam provides an anatomical reference. When these two scans are fused together, your physician can assess your disease in the proper anatomical context of your body.

Why do I need this exam?

An Ga 68 Netspot PET/CT Scan can provide information to your referring physician that can be used for the planning and management of your care, as well as determining therapy and monitoring your progress.

What should I expect when I arrive?

When you arrive, we will review your history and any past exams. For the PET portion of the exam you will receive a radiopharmaceutical injection. This is a radioactive tracer that must pass multiple quality control measures before it is used for any patient injection. PET radiopharmaceuticals lose their radioactivity very quickly and only very small amounts are injected.

For most studies, you will have to wait 1 hour between injection and your scan for the radiopharmaceutical to distribute through your body. During this time, you will be asked to relax in a quiet room by yourself.

We ask that all family members remain in our waiting room. You may use portable listening devices and bring reading materials with you during this time. You will be asked to drink clear fluids during this 1 hour time frame before your images are obtained.

What will the scan be like?

You will lie on a table that will move slowly through a circular-shaped PET/CT scanner as it acquires the information needed to generate diagnostic images. The unit looks similar to a CT scanner. You will be asked to lie very still during the scan because movement can interfere with the results. For the CT scan you may be asked to hold your breath for a few seconds to minimize body movements. During the scan, you might hear a humming noise but you will not feel anything except the table move while images are being taken at certain locations on your body. The technologist will monitor you during the exam, this can typically last between 30 and 40 minutes.

How long will all this take?

The exam procedure can vary considering each patient's individual needs. Plan to spend approximately two hours in total with us.

What happens after the exam?

You may leave as soon as the exam is complete. Unless you have received special instructions, you will be able to eat and drink immediately. Drinking fluids soon after the exam will help remove any of the radiopharmaceutical that may still be in your system. In the meantime, we will begin preparing the results of your exam for review by one of our onsite Radiologists. Once dictated and transcribed the results will be sent to your physician who will tell you the outcome of your study. Results take up to 1 week to be processed and analyzed.

Safety of Ga 68 Netspot PET/CT Scans

Be assured that Ga 68 Netspot PET/CT scans are a safe and effective diagnostic procedure. A very small amount of PET radiopharmaceuticals are injected and they lose their radioactivity in several hours time.

After your PET/CT Scan:

- Drink plenty of water to help flush the tracer out of your system, urinate frequently during the first hours following your scan.
- Test results take up to a week to be processed and analyzed.
- Resume all medications.
- Close contact with infants and pregnant women should be restricted during the first 12 hours after your procedure. Nursing mothers should substitute stored breast milk or infant formula for breast milk for 12 hours following your procedure.